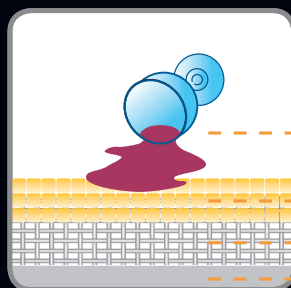




Protech
Antimanchas
Stain Resistant

La tecnología PROTECH es una protección avanzada que ofrece un rendimiento muy superior al de los otros tejidos recubiertos disponibles en el mercado, ya que proporciona una mayor resistencia a la abrasión, a los rayos UV, al alcohol y a los productos químicos.

PROTECH technology is an advanced protection that offers much higher performance than the other coated fabrics available on the market, as it provides greater resistance to abrasion, UV rays, alcohol and chemicals.



Liquids and stains
Protech
Upholstery
Backing

Aplicaciones - Uses



Mantenimiento y Limpieza - Care & Cleaning



Recomendamos aspirar o cepillar con un cepillo suave la tapicería para eliminar el polvo y otros residuos.

Las manchas deben eliminarse inmediatamente con un paño limpio húmedo y jabón neutro. Frotar ligeramente la mancha y secar con un secador de pelo desde el exterior hacia el interior.

Tipos de manchas:

Licor, vino, café, etc.: Frotar ligeramente con un paño limpio húmedo. Para manchas de licor use alcohol diluido; para manchas de vino use vinagre blanco diluido; para manchas de café o té use amoníaco diluido.

Aceite y grasa: Frotar con agua tibia y jabón neutro. Si las manchas persisten, use un quitamanchas en seco; aplique el producto con un paño limpio frotando delicadamente desde el exterior hacia el interior. Aconsejamos probar previamente en una zona poco visible.

Tinta: Frotar la mancha con papel de cocina y después presionar con un paño humedecido con alcohol.

Precaución:

No utilice lejía, ceras, quitamanchas, productos lavavajillas ni ningún otro disolvente.

Normas de lavado:

Lavar a mano con agua tibia o lavar a máquina a 30° y jabón neutro, sin escurrir ni centrifugar. No utilizar secadora. Para secar se puede utilizar una toalla o un secador de pelo a temperatura media-baja.

We recommend to vacuum or brush the upholstery with a soft brush to remove dust and other residue.

The stains should be removed immediately with a clean damp cloth and neutral soap. Rub the stain lightly and dry with a hair dryer from the outside to the inside.

Stain types:

Liquor, wine, coffee, etc.: Rub lightly with a clean damp cloth. For liquor stains use diluted alcohol; for wine stains use diluted white vinegar; for coffee or tea stains use diluted ammonia.

Oil and grease: Rub with lukewarm water and neutral soap. If the stains persist, use a dry stain remover; apply the product with a clean cloth gently rubbing from the outside to the inside. We advise to test previously in a little visible area.

Ink: Rub the stain with kitchen paper and then press with a damp cloth moistened with alcohol.

Caution:

Do not use bleach, waxes, stain removers, dishwashing products or any other solvent.

Washing rules:

Wash by hand with lukewarm water or machine wash at 30° and neutral soap, with no drying or centrifuge. Do not machine dry. To dry you can use a hand towel or a hair dryer at medium-low temperature.



SUEDER

2023



Protech
Antimanchas
Stain Resistant



Odox
Optional



Eco&free



FIREX

Revolution Treatment
ignífugo · transpirable
impermeable · bioproof
fire retardant · breathable
waterproof · bioproof

SUEDER



Composición
Composition
superficie - surface
soporte - backing

Ecosued
Cabra

100% Polyester
67% Polyester
33% Cotton

Basic

100% Polyester

Simetric

100% Polyester

Fusion W

100% Polyester
100% Polyester

Velsued⁽¹⁾
Grand Velsued⁽²⁾
Velsued Airflow⁽³⁾

100% Polyester



Peso
Weight

317 g/m²

170 g/m²

275 g/m²

275 g/m²

⁽¹⁾ 330 g/m²
⁽²⁾ 720 g/m²
⁽³⁾ 810 g/m²



Ancho
Width

145 cm ± 2%

150 cm ± 2%

150 cm ± 2%

150 cm ± 2%

150 cm ± 2%



Tratamiento ignífugo
Fire Retardant treatment

OPTIONAL:

UNE 1021 parts 1 and 2
BS 5852 parts 1 (Cigarette
& Match)
NFP 92503 M1-M2
IMO MSC (88) part 8 (MED)
BS 5852 CRIB 5
UNI 9175 CLASSE 1M

OPTIONAL:

UNE 1021 parts 1 and 2
BS 5852 parts 1 (Cigarette
& Match)
NFP 92503 M1-M2
IMO MSC (88) part 8 (MED)
BS 5852 CRIB 5
UNI 9175 CLASSE 1M

OPTIONAL:

UNE 1021 parts 1 and 2
BS 5852 parts 1 (Cigarette
& Match)
NFP 92503 M1-M2
IMO MSC (88) part 8 (MED)
BS 5852 CRIB 5
UNI 9175 CLASSE 1M

NO

OPTIONAL:

UNE 1021 parts 1 and 2
BS 5852 parts 1 (Cigarette
& Match)
NFP 92503 M1-M2
IMO MSC (88) part 8 (MED)
BS 5852 CRIB 5
UNI 9175 CLASSE 1M



Consultar para uso en cortinas - Consult for use in curtains

FSM persigue constantemente mejorar las especificaciones, el diseño y la producción de sus tejidos, no debiéndose considerar este catálogo guía infalible de las especificaciones actuales.

FSM continuously try to improve the design and production. Should not consider this catalogue a guaranteed guide of current specifications.

Este catálogo anula el anterior - This catalogue cancels the previous one

contract line

ECOSUED



blanco 500



crema 150



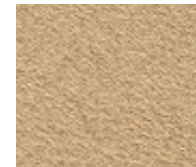
crudo 151



arena 071



canela 067



beige 110

BASIC



FIREX



CABRA



SIMETRIC



GRAND VELSUED



winter



alba



magnolia



egypt



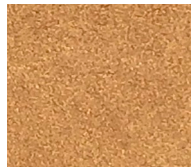
amande



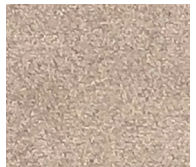
lion



mahogany



caramel



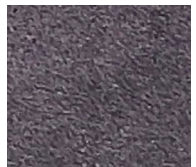
moon



seal



lava



black



storm



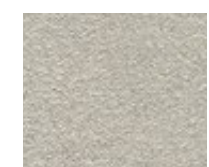
army



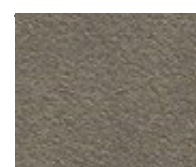
polar



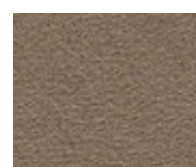
brise



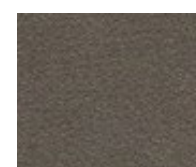
marfil 078



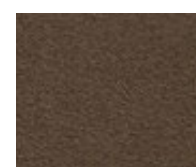
piedra 072



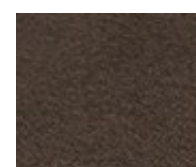
tierra 705



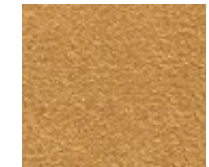
marengo 812



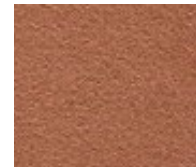
marron 811



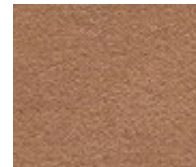
cacao 821



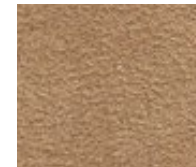
ocre 125



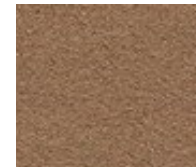
arcilla 409



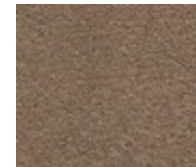
almond 084



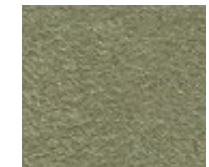
capuccino 051



cafe 180



castaño 181



caqui 700



malva 156



celeste 421



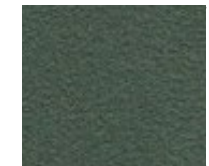
metal 470



gris 475



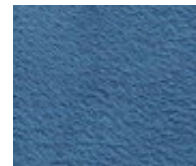
negro 901



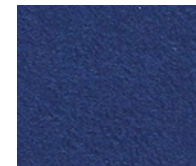
oliva 405



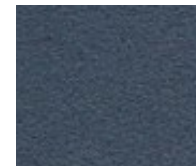
orinoco 406



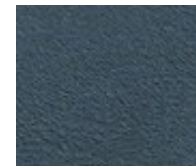
marino 408



electric 410



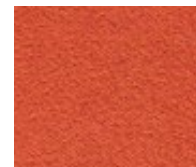
zafiro 912



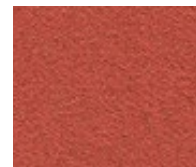
azul 941



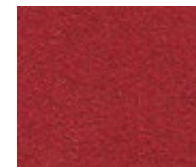
amarillo 515



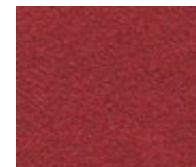
naranja 127



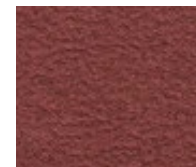
terracota 224



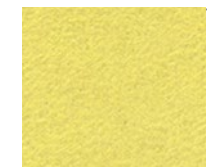
rubi 096



granate 201



vino 801



sol 122



trigo 126



fucsia 420

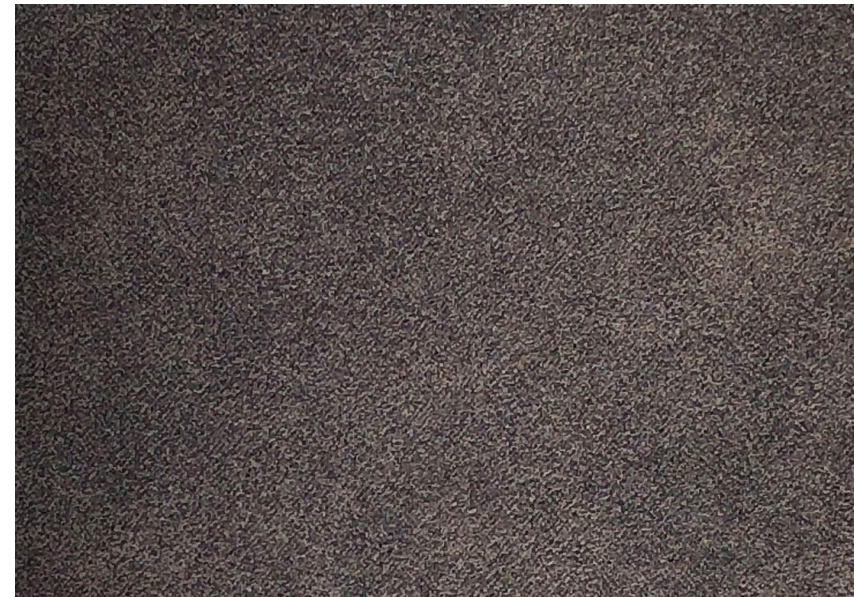


lila 422



violeta 425

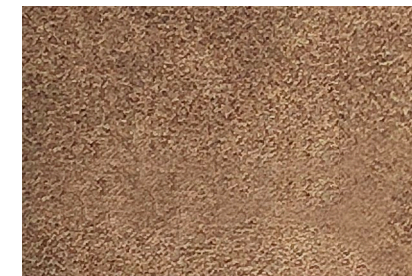
FUSION W



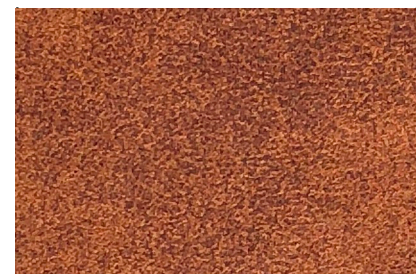
gris 9475 W



arena 9071 W



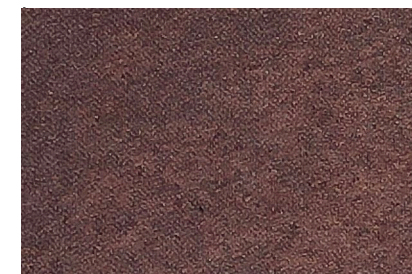
piedra 9072 W



cafe 9180 W



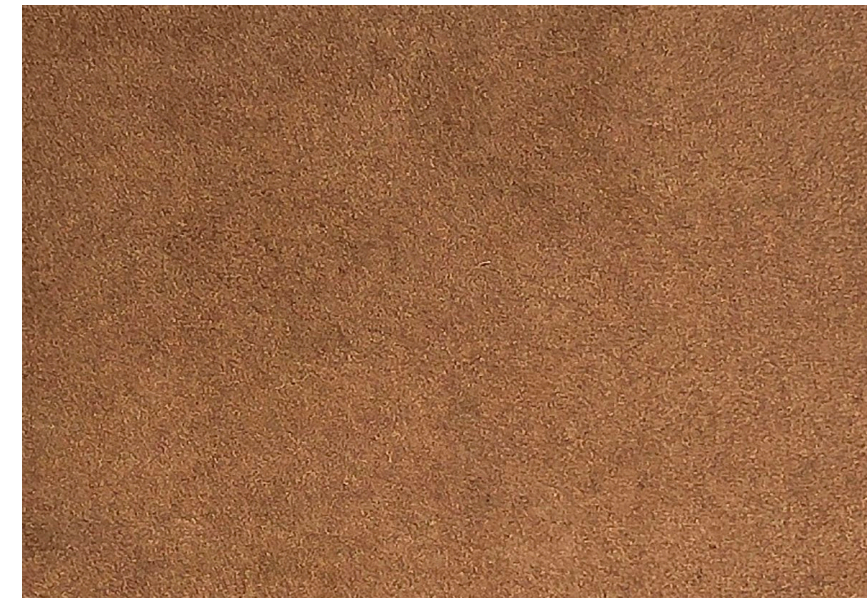
capuccino 9051 W



marron 9811 W

Acabados disponibles en todos los colores ECO - Finishes available in all ECO color range

VELSUED



VELSUED *airflow*®

